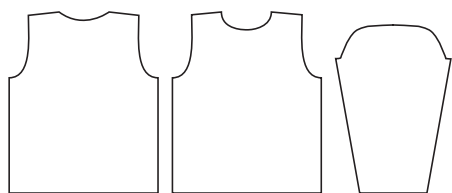


BOY'S STRIPED PURL FABRIC JUMPER

 Intermediate Knitting



MEASUREMENTS	YEARS	2	4	6	8	10
To Fit Chest	cm	55	60	65	70	75
Actual Size	cm	60	65	71	76	81
Length (approx)	cm	33	38	42	46	50
Sleeve Length	cm	23	28	33	38	40
SHEPHERD COLOUR 4 ME PRINTS 8 PLY 50g balls						
Main Colour (M)		3	4	5	6	7
AND SHEPHERD COLOUR 4 ME 8 PLY 50g balls						
Contrast Colour (C)		3	3	4	4	5
Use only the yarns specified. Other yarns are likely to produce different results. Quantities are approximate as they can vary between knitters. Check the ball bands to ensure all yarn is from the same dye lot.						

NEEDLES AND EXTRAS

- 1 pair 4.00mm (UK 8) knitting needles and a **set** of 3.25mm (UK 10) **double-pointed** knitting needles or size needed to give correct tension.
- wool needle for sewing seams.

TENSION

22 sts and 30 rows to 10cm over stocking st, using 4.00mm needles.
To work a tension square, using 4.00mm needles, cast on 33 sts.
Work 44 rows stocking st. Cast off loosely.
Check your tension carefully.
If less sts to 10cm use smaller needles, if more sts use bigger needles.

BACK

Using 4.00mm needles and **C**, cast on **66** (74-82-90-90) sts.

1st row – K3, * P4, K4, rep from * to last 7 sts, P4, K3.

2nd row – P3, * K4, P4, rep from * to last 7 sts, K4, P3.

Rep last 2 rows **5** (6-8-8-8) times, **inc** (dec-**dec**-dec-**inc**) **2** (0-2-4-2) sts evenly across last row ... **68** (74-80-86-92) sts, **12** (14-18-18-18) rows rib in all.

Beg Stripe Patt –

NOTE – 2 balls of **M** are used when working stripes. This allows **M** to be carried up at side edge without breaking off after each stripe.
Using **M**, **1st row** (right side) – Purl.

2nd row – Knit.

Using **C**, **3rd row** – Purl.

Using another ball of **M**, **4th row** – Knit.

5th row – Purl.

Using **C**, **6th row** – Knit.

Last 6 rows form stripe patt for rem, noting to alternate balls of **M** (as before).

Cont in patt until Back measures **20** (24-27-29-32) cm from beg, ending with a knit row.

Shape Armholes –

Keeping stripes correct, cast off **3** (3-4-4-4) sts at beg of next 2 rows ... **62** (68-72-78-84) sts.

Dec one st at each end of next row, then in every foll alt row until

56 (60-64-68-70) sts rem. **

Work **31** (31-35-39-37) rows.

Shape Back Neck and Shoulders –

Next row – P**14** (15-15-17-18), loosely cast off next **28** (30-34-34-34) sts, purl to end.

Cont on these **14** (15-15-17-18) sts for left side of back neck.

Dec one st at neck edge in next 2 rows ... **12** (13-13-15-16) sts.

Next row – Cast off **6** (6-6-7-8) sts, knit to last 2 sts, K2tog.

Work 1 row.

Cast off rem **5** (6-6-7-7) sts.

With wrong side facing, join appropriate colour to rem **14** (15-15-17-18) sts for right side of back neck.

Next row – K2tog, knit to end.

Next row – Cast off **6** (6-6-7-8) sts, purl to last 2 sts, P2tog ... **6** (7-7-8-8) sts.

Next row – K2tog, knit to end.

Cast off rem **5** (6-6-7-7) sts.

FRONT

Work as for Back to **.

Work **17** (17-19-23-19) rows.

Shape Neck -

Next row – P20 (22-23-25-26), **loosely** cast off next **16** (16-18-18-18) sts, purl to end.

Cont on these **20** (22-23-25-26) sts for right side of neck.

Dec one st at neck edge in next **6** (8-8-8-8) rows, then in every foll alt row until **12** (13-13-15-17) sts rem, then in every foll 4th row until **11** (12-12-14-15) sts rem.

Work 2 rows.

Shape Shoulder -

Cast off **6** (6-6-7-8) sts at beg of next row.

Work 1 row.

Cast off rem **5** (6-6-7-7) sts.

With wrong side facing, join appropriate colour to rem **20** (22-23-25-26) sts for left side of neck.

Dec one st at neck edge in next **6** (8-8-8-8) rows, then in every foll alt row until **12** (13-13-15-17) sts rem, then in every foll 4th row until **11** (12-12-14-15) sts rem.

Work 1 row.

Shape Shoulder -

Work as for other shoulder shaping.

SLEEVES

Using 4.00mm needles and **C**, cast on **42** (42-42-42-50) sts.

Work **12** (14-18-18-18) rows rib as for Back, **dec** (dec-inc-inc-dec) **2** (0-2-2-2) sts evenly across last row ... **40** (42-44-44-48) sts.

Beg Stripe Patt -

Work 2 rows stripe patt as for Back.

Keeping patt correct, inc one st at each end of next row, then in every foll **8th** (10th-12th-12th-12th) row until there are **46** (52-50-50-52) sts, then in every foll **10th** (12th-14th-14th-14th) row until there are **52** (54-56-58-62) sts.

Cont without further shaping until Sleeve measures **23** (28-33-38-40) cm from beg, ending with a knit row.

Shape Top -

Keeping stripe patt correct, cast off 2 sts at beg of next 2 rows ... **48** (50-52-54-58) sts.

Dec one st at each end of next row, then in every foll alt row until **32** (32-32-28-34) sts rem, then in every row until **18** (18-18-18-20) sts rem.

Cast off 2 sts at beg of next 2 rows.

Cast off rem **14** (14-14-14-16) sts.

POCKET

Using 4.00mm needles and **C**, cast on **13** (15-15-17-17) sts.

Work in stocking st (knit row is **right** side) until Pocket measures **6** (7-7-8-8) cm from beg, ending with a purl row.

Cast off **loosely**.

NECKBAND

NOTE – We recommend using mattress stitch to sew up your handknit.

Join shoulder seams. With right side facing, using **set** of 3.25mm **double-pointed** needles and **C**, beg at left shoulder, knit up **16** (19-20-20-20) sts evenly along left side of front neck, knit up **14** (14-16-16-16) sts across sts cast off at centre front, knit up **16** (19-20-20-20) sts evenly along right side of front neck to shoulder, knit up 4 sts along right side of back neck, knit up **26** (28-32-32-32) sts across sts cast off at centre back, then knit up 4 sts along left side of back neck ... **80** (88-96-96-96) sts.

1st round – * K4, P4, rep from * to end.

Rep last round **7** (7-7-9-9) times.

Cast off **very loosely** in rib.

TO MAKE UP

If desired, with a slightly damp cloth and warm iron, press lightly on wrong side, avoiding rib bands. Sew pocket onto Front as illustrated. Join side and sleeve seams. Sew in sleeves.



Level 7
409 St Kilda Road
MELBOURNE VICTORIA 3004
A.B.N 85 055 366 590

T +61 3 9380 3888
F +61 3 9820 0989
www.shepherd yarns.com.au

This pattern is protected by copyright. Reproduction in any form (including photocopying) without prior permission from Australian Country Spinners will lead to proceedings being brought to restrain any infringement. The only exception is photocopying to enlarge graphs and written instructions for graphs. We have made every effort to ensure that these instructions are accurate and complete. We cannot however be responsible for variations in individual work, human error, typographical mistakes or if yarn other than the recommended Shepherd yarn is used.



CUSTOMER HOTLINES

For expert advice & information on yarn availability –
Call within New Zealand on 03 – 323 6665
Call within Australia on 1800 337 032